

DATA SHEET

ARUBA AIRWAVE

Centralized visibility and management for multivendor access networks

AirWave is a powerful and easy-to-use network operations system that not only manages wired and wireless infrastructures from Aruba and a wide range of third-party manufacturers, but also provides granular visibility into devices, users and applications running on the network.

With unprecedented insight and centralized control to effectively manage global enterprise infrastructures, AirWave lets IT organizations proactively optimize network performance, strengthen wireless security, and improve end-user experience.

Through a centralized and intuitive user interface, AirWave provides real-time monitoring, proactive alerts, historical reporting, and fast, efficient troubleshooting. It also offers dedicated dashboard views to quickly diagnose potential problems with RF coverage, unified communications and collaboration (UCC) traffic, application performance and network services health.

The optional Aruba Clarity software module proactively analyzes end-users' quality of experience by extending monitoring capabilities to critical network services. Measures such as time and response failures for a mobile device to associate with a Wi-Fi radio, authenticate to a RADIUS server, gather an IP address through DHCP, and resolve names for DNS services, give IT organizations end-to-end visibility into problems before they escalate. These metrics can be monitored in real-time, and also captured through on-demand or scheduled testing for predictive insight.

AppRF provides deep visibility into common applications and web traffic on the network to ensure mission-critical apps get priority, users are off risky sites, or for simply gauging usage patterns. Dedicated UCC dashboard provides rich visibility into Unified Communications applications such as Skype for Business and all Wi-Fi calls running on your network.

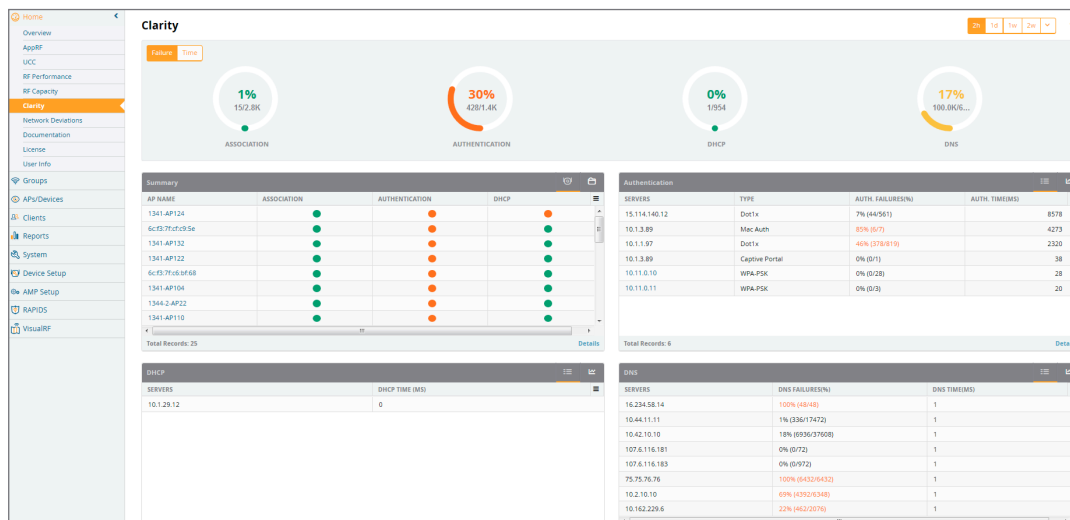


Figure 1: Insight into Non-RF metrics impacting users.

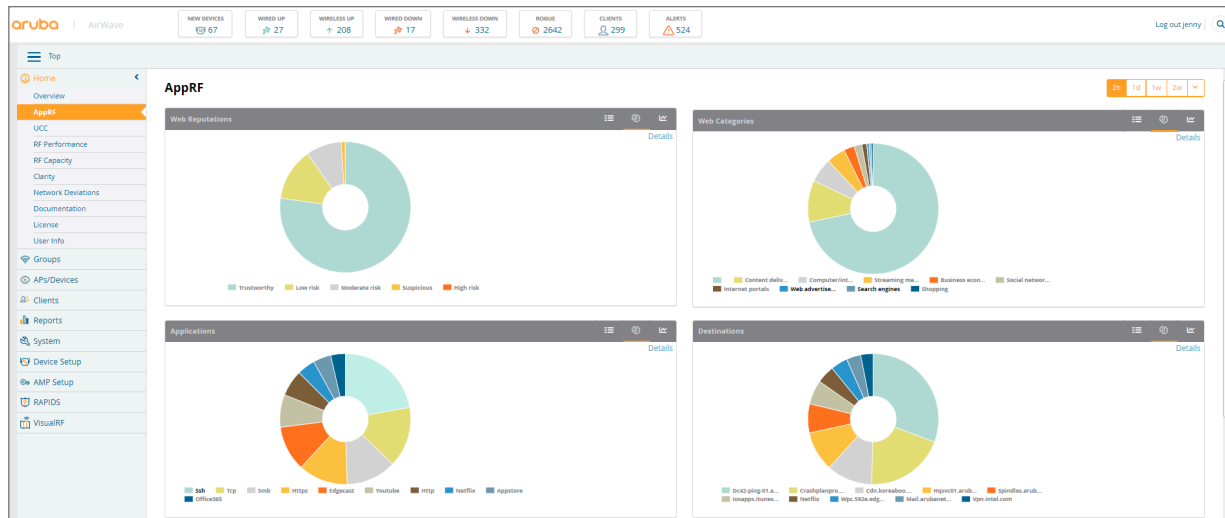


Figure 2: Granular visibility into apps and web traffic.

VisualRF location and mapping offers network-wide views of the entire RF environment. Maps of Wi-Fi coverage and the underlying wired topology show a clear and accurate picture of who is on the network, their location and how the network is performing. Additionally overlays of client health and application performance help to quickly diagnose issues specific to a client, a floor plan, or a specific location.

The AirWave RAPIDS rogue detection works with the RFPProtect wireless intrusion protection software module available in ArubaOS to collect rogue AP, rogue client and wireless intrusion events as well as mitigate rogue activity across wired and wireless infrastructures. The wireless data collected by RAPIDS is correlated with wired network data to identify the most significant and relevant threats, while greatly reducing false-positives and strengthening network security.

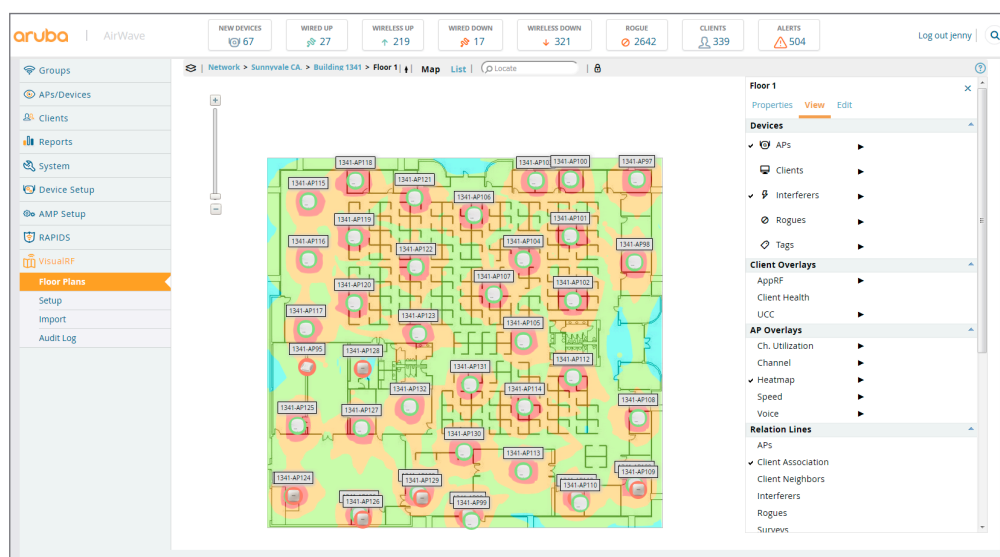


Figure 3: Network-wide visibility and location mapping.

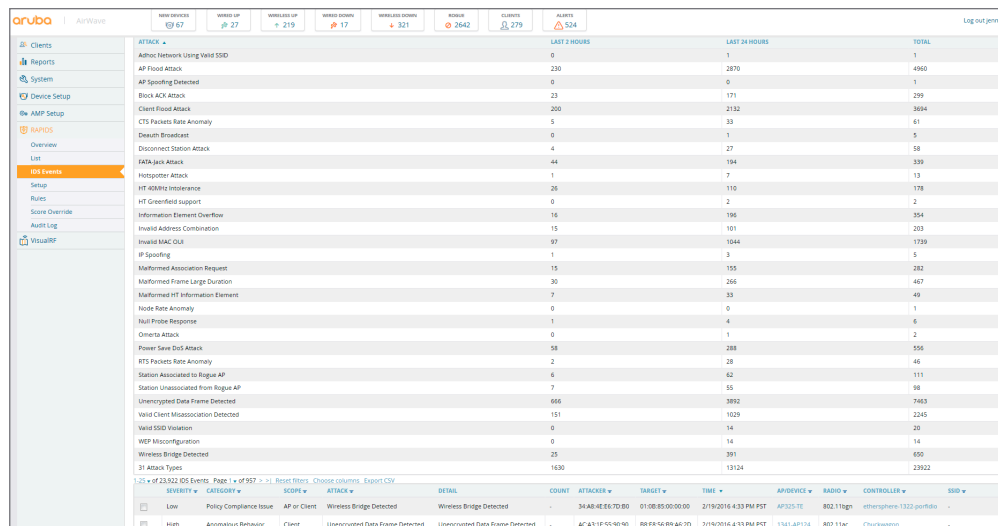


Figure 4: Detect more than 25 types of wireless attacks.

Available as software or a combined hardware and software appliance, AirWave gives IT the power to make intelligent, well-informed decisions about the network while reducing cost and complexity of improving service quality.

REAL-TIME MONITORING AND VISIBILITY

- Automatically track every user and device – wireless and remote – on the network.
- Gain visibility into clients associated to network including location, SNR, connection speed and more.
- Measure response times and failures rates for client association with Wi-Fi radio, authentication with a RADIUS server, gathering IP address through DHCP, and resolving names for DNS services.
- Monitor wired infrastructure that connects wireless controllers and APs.
- View radio and RADIUS errors, including noise floor and channel utilization information, frequent causes of connectivity problems.
- Drill down rapidly from network-wide to device-level monitoring views.
- Track RF performance, capacity and application-level statistics, web traffic as well as network deviations over a 40-week period.

DEVICE DISCOVERY

- Automatically discover WLAN infrastructure devices.
- Operate in any network environments, including large distributed networks with multiple locations.

TROUBLESHOOTING AND DIAGNOSTICS

- View client device data from ArubaOS, Aruba Instant and Aruba ClearPass Policy Manager including device type, operating system, operating system details, manufacturer and model.
- Search for clients by user name or MAC address for a diagnostic view of device and network statistics along with indicators to evaluate overall health and performance.
- Overlay client health on a floor plan to diagnose issues specific to the client or to an area on a floor plan.
- Easily diagnose RF issues in the network for advanced RF troubleshooting.

ROOT CAUSE ANALYSIS AND EVENT CORRELATION

- Map upstream relationships between APs, controllers and switches to identify the root cause of downtime and performance problems.
- Correlate performance and downtime issues to send only a single alert in the event of an upstream device failure.

CONFIGURATION MANAGEMENT

- Automatically configure APs, controllers, Aruba Instant, and Aruba Switches .
- Define configuration policies through a web user interface or by importing known-good configuration from an existing device.

- Configure Aruba Instant APs to provision large number of branch locations with ease. Manage configurations across multiple locations easily with tools like adding notes, and overrides, as well as multi-edit and context-sensitivity support.
- Eliminate time-consuming and error-prone manual updates with efficient remote software distribution.
- Support advanced firmware image upgrades with features such as enforcing certified versions by group, splitting-up image downloads and reboot processes, as well as support for scheduling of firmware upgrades or change configurations to occur during off hours.
- Archive device configurations for auditing and version control. Additionally, archive device configurations and flash backups to restore previous state and configuration of Aruba controllers.
- Maintain detailed audit logs of changes made by all AirWave operators.

BETTER NETWORK PLANNING AND PROVISIONING

- VisualRF and the offline VisualRF Plan tool allow quick planning of RF and wired coverage for new sites.

MANAGE LATEST TECHNOLOGIES, ARCHITECTURES AND PRODUCTS

- A single management interface for multiple generations of devices.
- Support autonomous, controller-managed and mesh APs, including outdoor Aruba AirMesh.
- Monitor wired edge devices using standard MIB data.
- Generate reports on wired port utilization for capacity planning.
- Support latest ArubaOS and ArubaOS-Switch management capabilities.

EASY-TO-USE WEB INTERFACE

- Role-based access, viewing rights and administrative privileges tailored to job responsibilities.
- Custom graphs of key information allow for pan and zoom for visibility into specific periods of time.
- Identify and search for users by user name.
- Client overview summarizes the types of clients attached to the network and provides visibility into watched or VIP clients.
- Multiple dashboard views provide visibility into every aspect of RF, clients, apps and network services.